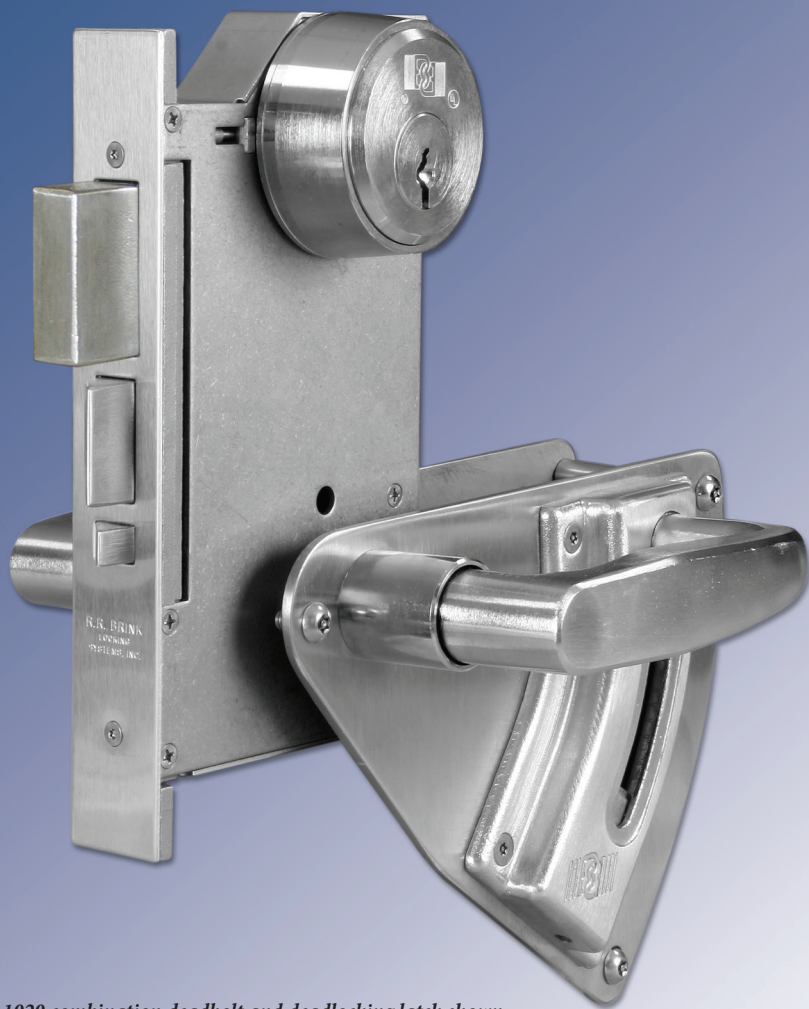


# 1020

## Extra Heavy Duty Construction – Latch and Deadbolt with Mogul Key Cylinder and Lever Eskort or Knob Trim

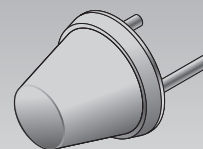
5/8" Latch Throw – 1" Deadbolt Throw – Stainless Steel Construction



*1020 combination deadbolt and deadlocking latch shown with R.R. Brink Mogul key cylinder, and Lever Eskort*



*Security Knob-Trim Available  
Safety Knob (optional)*



*The conical shape of the optional safety knob prevents holding a door closed by grasping the knob.*



*Stainless steel  
strike plate*



**R.R. BRINK LOCKING SYSTEMS, INC.**

500 Earl Road--Shorewood, IL 60404

Tel: 815-744-7000--Fax: 815-744-7020

[www.rrbrink.com](http://www.rrbrink.com)

### Application

The 1020 series of Mogul key and Lever Eskort or knob operated deadlocking latch/deadbolt is ideal for use in detention institutions as well as commercial, government, and industrial buildings for utmost physical security. The large-scale design accommodates an oversized latch and deadbolt plus the RRBLs proprietary Mogul key cylinder. These institutional grade construction features and tamper resistant fittings provide exceptional structural strength

to impede forced and surreptitious entry. The 1020 meets ASTM F1450 and F1577 impact test requirements as certified by an independent testing laboratory.

Appropriate for locking hollow metal doors in secure perimeters and/or high usage openings in all building types. A function is available to suit most passage requirements. (See lock function selection chart.)

# 1020

## Construction Specification

- 5/8" throw latch
- 1" throw deadbolt
- Cast stainless steel armor front – 1/2" thick
- Cast latch, auxiliary latch, and deadbolt of stainless steel
- Lock case, strike plate, springs, and other working parts of stainless steel
- Exposed fasteners – pinned "Torx" head.
- Optional RRBLs proprietary Mogul key cylinder

## Trim (Specify)

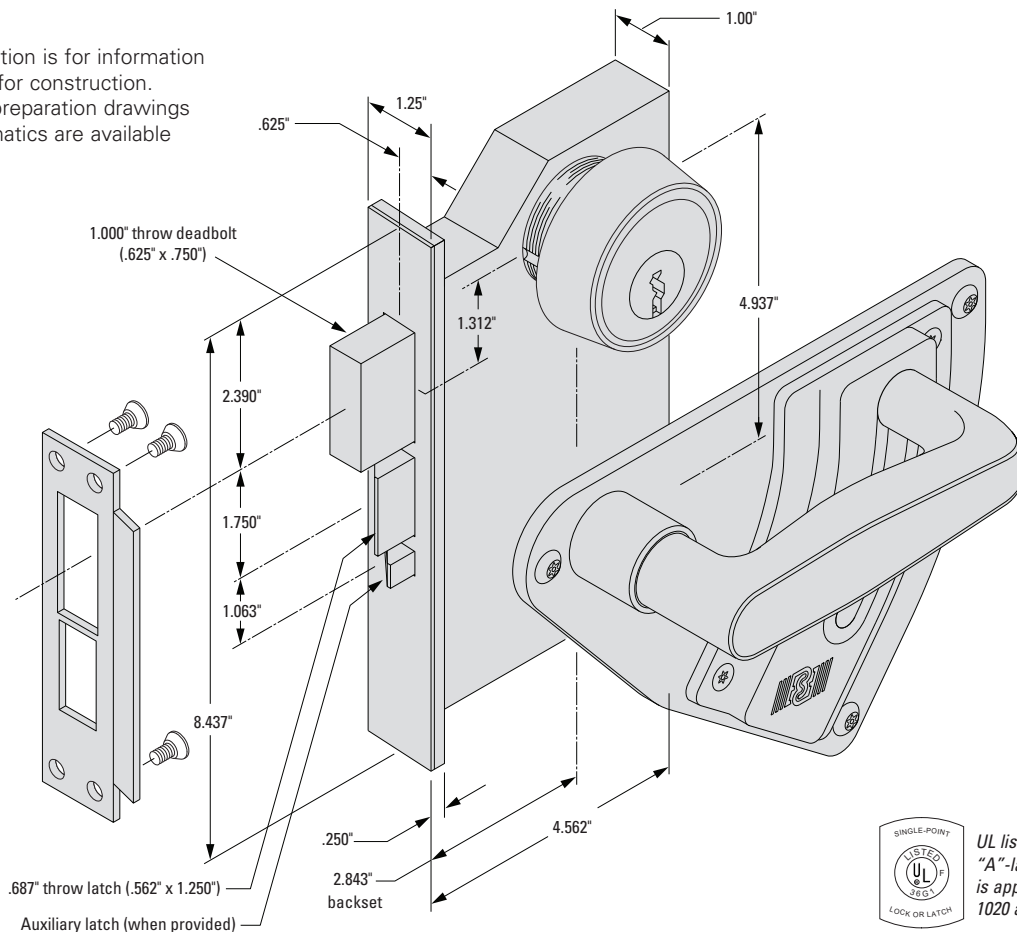
- Lever Eskort (specify LE) – Solid cast brass and wrought stainless steel. Enables the designer/specifier to satisfy Americans with Disabilities Act (ADA) accessibility requirements and avoid intentional, forced lever breakage.
- Security Knob & Rose (specify KR) –solid brass – free spinning inactive knob
- Safety Knob (specify SK) – Solid brass, conical shaped knob serves to limit handgrip to prevent holding a door closed. Specifically designed for jail/prison sleeping room doors.

## Standard Finishes

- Face Plate – Wrought Satin Stainless Steel (ANSI 630, US32D)
- Lever Eskort Trim – Satin Chrome on Brass (ANSI 626, US26D) and Wrought Stainless Steel (ANSI 630, US32D)

### 1020 Illustrated

Note: This illustration is for information only. Do not use for construction. Door and frame preparation drawings and wiring schematics are available from the factory.



UL listing is for a 3-hour "A"-label fire door and is applicable to models 1020 and 1030.

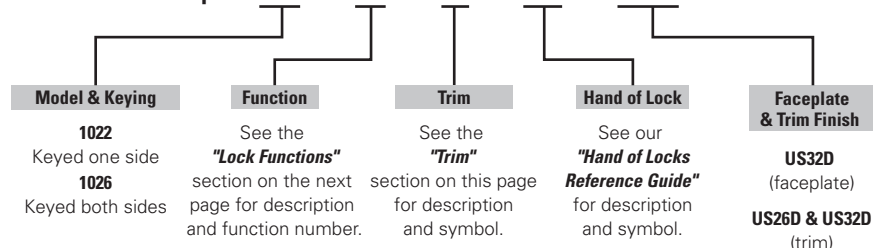
## Custom Applications

Consult with our technical service personnel regarding custom applications such as retrofits to existing lock installations, special mounting conditions, and Lever Eskort compatibility with other manufacturers' locksets.

## Ordering Information

Model	Description	Key cylinders
1022	Keyed one side only	Mogul type (priced separately)
1026	Keyed both sides	Mogul type (priced separately)

Example: 1022 – 201 – SK – LHR – US26D



## How to Specify Lock Functions

Refer to the diagrams to determine the lock function designation number for a particular application. To specify the function of a 1020 Series mechanical lock, you must first determine the following:

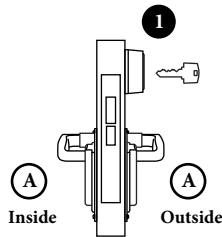
1. The “inside” and “outside” of the opening.
2. Lock keyed one (1022) or both (1026) sides.
3. The desired lever/knob functions for the “inside” and “outside” and choose the corresponding lock function number (i.e. 1022-201, etc.).
4. The hand of the lock (refer to “Hand of Locks Reference Guide” for explanation of lock handing).

### Lock-Function Notations

- (A) Active Trim – retracts the latchbolt only
- (B) Active Trim – retracts the deadbolt and latch simultaneously
- (I) Inactive Trim – functions as a door pull only (optional) free spinning knob
- 1 Outside cylinder operates deadbolt only
- 2 Inside cylinder operates deadbolt only
- 2T Inside thumbturn operates deadbolt only
- 3 Outside cylinder operates deadbolt and deadlatch
- 4 Inside cylinder operates deadbolt and deadlatch
- 4T Inside thumbturn operates deadbolt and deadlatch
- 5 Outside cylinder operates deadlatch

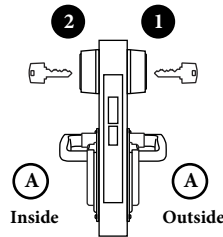
## 1020 Lock Functions Lever Trim shown – Knob Trim available

201



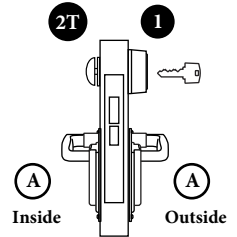
Latch and Deadbolt

202



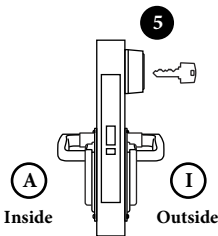
ANSI F14  
Store/Utility Door Lock  
Latch and Deadbolt

203



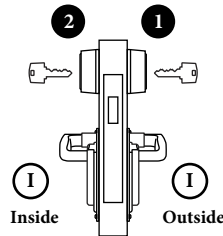
ANSI F21  
Room Door Lock  
Latch and Deadbolt

204



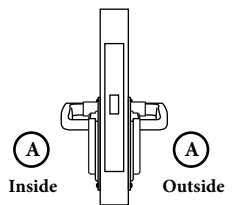
ANSI F07  
Closet or Storeroom Lock  
Deadlocking Latch Only

206



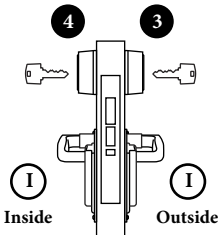
ANSI F16  
Deadbolt Only

207



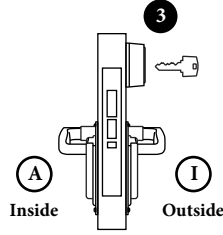
ANSI F01  
Closet or Passage Lock  
Latch Only

208



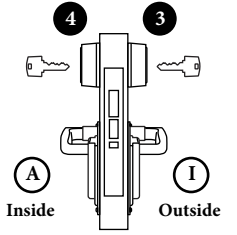
Deadlocking Latch  
and Deadbolt

209



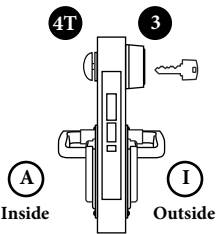
Deadlocking Latch  
and Deadbolt

210



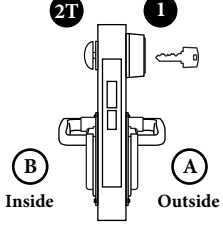
Deadlocking Latch  
and Deadbolt

211



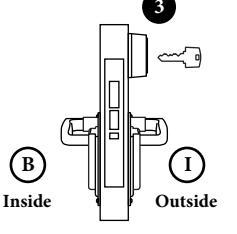
Deadlocking Latch  
and Deadbolt

212



ANSI F13  
Dormitory or Exit Lock  
Latch and Deadbolt

214



Deadlocking Latch  
and Deadbolt



R.R. BRINK LOCKING SYSTEMS, INC.

500 Earl Road--Shorewood, IL 60404  
Tel: 815-744-7000--Fax: 815-744-7020  
www.rrbrink.com